



Vestil Manufacturing Corp.
 2999 North Wayne Street, P.O. Box 507, Angola, IN 46703
 Telephone: (260) 665-7586 -or- Toll Free (800) 348-0868
 Fax: (260) 665-1339
www.vestilmfg.com e-mail: info@vestil.com

CH-200 Series Block Lifters Instruction Manual



Receiving instructions:

After delivery, remove the packaging from the product. Inspect the product closely to determine whether it sustained damage during transport. If damage is discovered, record a complete description of it on the bill of lading. If the product is undamaged, discard the packaging.

NOTE:

The end-user is solely responsible for confirming that product design, use, and maintenance comply with laws, regulations, codes, and mandatory standards applied where the product is used.

Table of Contents

Specifications.....	2
Signal Words.....	3
Hazards of Improper Use.....	3
Exploded View & Bill of Materials.....	4
Using the Lifter.....	5
Inspections & Maintenance.....	5 - 6
Labeling Diagram.....	6
Limited Warranty.....	7

Specifications:

Dimensions and other information appear in the diagrams and tables below.

CH-200-20

<p>Adjustable lifting bale</p> <p>1"</p> <p>2"</p> <p>23"</p> <p>10"</p> <p>1 3/4"</p> <p>3 1/2"</p>	<p>Capacity = 200 lb. (90.9kg)</p> <p>Maximum block height = 10" (25.4cm)</p> <p>Hand wheel clamping fixture</p> <p>Block contact surface</p> <p>Length = 3 1/2" (8.9cm)</p> <p>Width = 6" (15.2cm)</p> <p>Overall headroom (top of bale opening to bottom of block support) = 23" (58.4cm)</p> <p>Adjustable lifting bale</p> <p>Usable bale opening = 1" x 2" (2.5x5.1)cm</p> <p>Net weight = 19.6 lb. (8.9kg)</p>
--	--

CH-200-30

<p>Adjustable lifting bale</p> <p>1"</p> <p>2"</p> <p>33"</p> <p>20"</p> <p>1 3/4"</p> <p>3 1/2"</p>	<p>Capacity = 200 lb. (90.9kg)</p> <p>Maximum block height = 20" (50.8cm)</p> <p>Hand wheel clamping fixture</p> <p>Block contact surface</p> <p>Length = 3 1/2" (8.9cm)</p> <p>Width = 6" (15.2cm)</p> <p>Overall headroom (top of bale opening to bottom of block support) = 33" (83.8cm)</p> <p>Adjustable lifting bale</p> <p>Usable bale opening = 1" x 2" (2.5x5.1)cm</p> <p>Net weight = 21.7 lb. (9.9kg)</p>
--	--

Signal Words:

This manual uses SIGNAL WORDS to direct the reader's attention to important safety-related messages. These messages describe uses of the product that could result in personal injury or property damage. Each signal word connotes a specific hazard level. The following are definitions of signal words used in this manual.



Identifies a hazardous situation which, if not avoided, WILL result in DEATH or SERIOUS INJURY. Use of this signal word is limited to the most extreme situations.



Identifies a hazardous situation which, if not avoided, COULD result in DEATH or SERIOUS INJURY.



Indicates a hazardous situation which, if not avoided, COULD result in MINOR or MODERATE injury.



Identifies practices likely to result in product/property damage, such as operation that might damage the product.

Hazards of Improper Use:

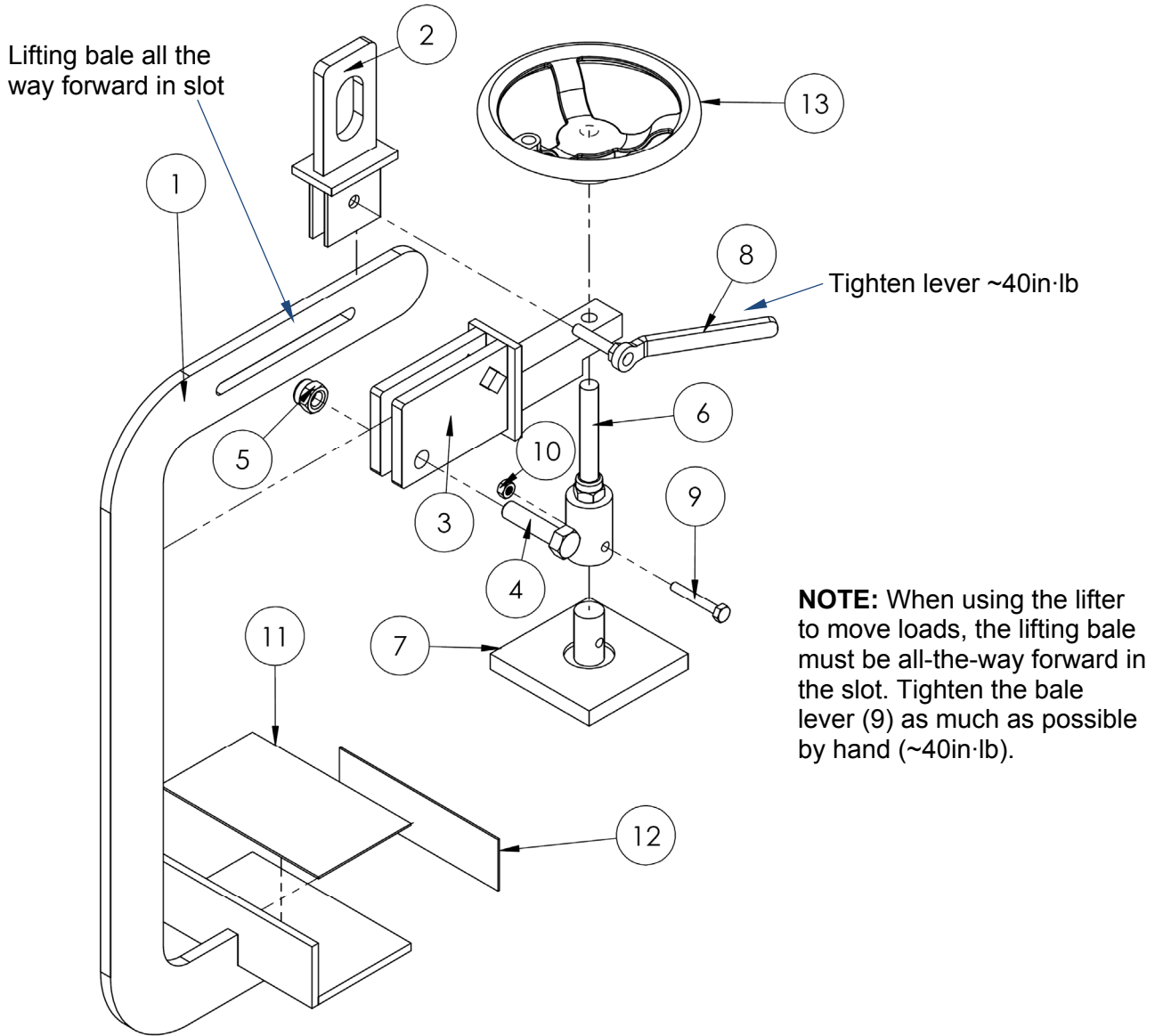
Vestil strives to identify all foreseeable hazards associated with the use of its products. However, material handling is dangerous and no manual can address every conceivable risk. The most effective means of preventing injury is for the end-user to apply sound judgment whenever using this device.



If this product is used improperly or carelessly, serious personal injuries might result. To reduce the likelihood of injury:

- Review the safety messages included in the manuals for your crane, trolley, hoist, and all other devices used with the lifter.
- Inspect and maintain the lifter before each use according to the instructions on p. 5-6. These procedures supplement the inspection and maintenance procedures of ASME B30.20.
- **ONLY** attach the lifter to a latching hook to prevent accidental detachment from the hoist.
- **DO NOT** remove or obscure any label or tag. Verify that all labels as shown in the “Labeling Diagram” on p. 6 are present and easily readable before each time the lifter is used.
- **DO NOT** use the lifter if it cannot securely grasp a block.
- **DO NOT attempt to lift material that exceeds the load rating.** **ALWAYS** make sure that the load weighs no more than 200 pounds.
- **DO NOT** lift a load higher than necessary.
- **DO NOT** raise the load over your feet or any other part of your body.
- **DO NOT** use the lifter to lift material over people.
- Watch the lifter and load. You are less likely to be injured if the load remains within your sight at all times.
- **DO NOT** leave a suspended load unattended.
- **DO NOT** modify the lifter in any way. Modifications might make the lifter unsafe to use and automatically void the Limited Warranty (see p. 7).

Exploded View & Bill of Materials



Item	Part no.	Description	Quantity
1	49-514-011	Weldment, frame, C-clamp lifter:	1
	49-514-012	CH-200-20	1
		CH-200-30	1
2	49-516-003	Weldment, bracket, sliding bale ("lifting bale")	1
3	49-516-005	Weldment, bracket, clamp slide ("supporting arm")	1
4	11211	Hex bolt, HHCS, 1/2"-13UNC x 2", zinc plated	1
5	37030	Lock nut, Nylon insert, 1/2"-13	1
6	49-516-004	Weldment, bracket, clamp screw	1
7	23-037-026	Cargo bar pad, 13/16" post	1
8	49-525-001	Weldment, handle, sliding bale	1
9	11010	Hex bolt, gr. A, zinc plated, 1/4"-20 x 1 3/4"	1
10	37018	Lock nut, gr. 2, zinc finish, 1/4"-20	1
11	49-053-001	Rubber mat, C-clamp lifter, 3 1/2" x 6"	1
12	49-053-002	Rubber mat, C-Clamp lifter	1
13	16-145-006	Wheel, hand wheel	1

Using the Lifter:

Review all warnings in “Hazards of Improper Use” on p. 3 before using the lifter for the first time. Only trained, designated persons should use the lifter. “Designated person” means someone selected by his or her employer, or by a representative of the employer, as competent to use the lifter. Trainees under the direct supervision of a designated person may also use the device.

NOTE: This device is classified as a “Load supporting lifter” in the American national standard ASME B30.20, which is a type of “structural and mechanical lifting device” (“SMLD”). The standard includes use, maintenance, and inspection recommendations for SMLD’s. The instructions in this manual are meant to **supplement** recommendations in the standard. You **must** acquire a copy of the standard.

Step 1: Make sure that the block surfaces are clean before using the lifter. Also make sure that the lifting bale is secured all the way forward in the slot (as shown).

Step 2: Turn the hand wheel counterclockwise until the clamp pad is fully retracted.

Step 3: Attach the lifter to your hoist. The hoist chain, or rope, must be equipped with a latching hook in normal condition.

Step 4: Move the hoist and lifter into position next to the block of material. Bring the lower jaw of the block clamp into contact with the bottom of the block. Make sure that the block rests against the vertical wall of the lower jaw.

Step 5: Turn the hand wheel clockwise until the clamp pad contacts the top of the block. Make the connection as solid as possible by hand (~20in-lb).

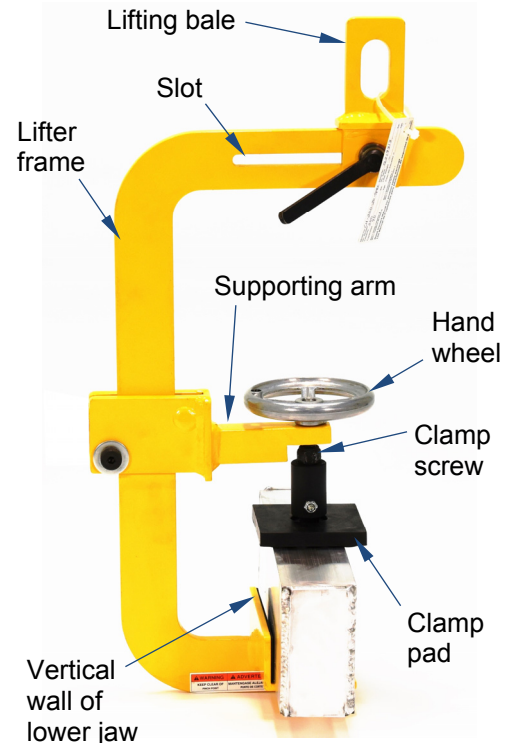
The hoist chain/cable should be straight up-and-down when the lifter is connected to a block. Deflection from vertical will cause the load to swing when it is lifted off of the ground. Swinging loads can cause serious injury. Swinging might also affect the clamp’s grasp on a block.

Step 6: Confirm that the lifter can control the load. Grasp the lifter and slowly raise the load just a few inches above the ground. Watch the block to make sure that it does not move within the clamp. If *any* movement occurs, lower the block to the floor. Reapply the clamp. Do not use the lifter to move a block that exceeds 200 pounds.

Step 7: When the block is securely clamped, grasp the lifter and raise the load to an ergonomic height, e.g. mid-chest level. Whenever moving a load:

- NEVER lift material over yourself or other people.
- Keep your hands away from the block while raising, lowering, and moving it.
- Always grasp the lifter and walk to the side at about arm’s length. Make sure that your clothing, feet, and all other parts of your body stay out of contact with the load.
- If you are using a motorized trolley, DO NOT push or pull on the lifter. Hold onto the lifter ONLY to stabilize it during travel.

Step 8: Make sure that the lifter is not swinging or rotating. Slowly lower the block. When the block rests on the floor/ground, release the clamp by turning the hand wheel counterclockwise. Lift the clamp pad off of the block.



Inspections & Maintenance:

Before using the lifter for the first time, create a written record that describes each component--the lifter body, clamp mechanism (hand wheel, clamp pad, clamp support arm), lifting bale, rubber matting on the lower jaw, and all hardware. This written record establishes “normal condition”. When conducting future inspections, compare those observations to the written record to determine whether a component needs to be repaired or replaced.

Regular inspections and maintenance are necessary for the lifter to remain in normal condition. Perform all inspections recommended in ASME B30.20 at least as frequently as recommended in the standard. In addition to the B30.20 inspections, perform the inspections described on p. 5-6. Correct all problems discovered during an inspection. Do not use the lifter if it cannot be restored to normal condition.

Before Each Lift

Visually inspect the lifter for damage such as bends, severe wear, warps, cracks, or other deformations of the lifter body, lifting bale, or block clamping mechanism (wheel, clamp pad, clamp supporting arm).

(Continued on p. 6)

(Continued from p. 5)

Frequent Inspections

Inspect the following at least once every 2 weeks:

1. **Hardware (bolts, nuts washers, pins):** inspect the hardware for loose connections and damage. Replace all damaged and missing hardware. Tighten loose connections. The lifting bale hardware should be tightened as solidly as possible by hand (~40in-lb).
2. **Clamping mechanism:** closely examine all parts of the clamping mechanism—hand wheel, clamp screw, clamp pad, supporting arm—for excessive wear, bends, and cracks. The clamp screw should rotate smoothly in both directions without much effort. The hand wheel must be securely attached to the top of the clamp screw. The clamp pad should not be cracked and suction pads should be intact
3. **Lifting bale:** make sure that the bale opening is not stretched, broken, or twisted. The metal around the bolt hole in the bale should not be cracked or distorted.
4. **Lifter frame:** inspect the frame of the lifter. Pay particularly close attention to the condition of the lower jaw, rubber matting, and the slot for the lifting bale. Permanently remove the lifter from service if it cannot be restored to normal operating condition.
5. **Labels and tags:** do not use the lifter unless all labels shown in the “Labeling Diagram” are in place, undamaged, and easily readable. Replace labels/tags whenever necessary.

Labeling Diagram:

Only use the lifter if ALL of the labels and tags shown in the diagram are readable and undamaged. Contact Vestil for replacements.



A: Tag 993 (front side; attached to lifting bale opening with cable tie)

⚠ WARNING	⚠ ADVERTENCIA
<ul style="list-style-type: none"> • DO NOT exceed rated capacity • DO NOT use if damaged, malfunctioning, or missing parts • DO NOT lift people OR lift loads over people • DO NOT raise load higher than necessary • DO NOT leave a suspended load unattended • DO NOT use lifter unless you read and understand the owner's manual • DO NOT alter OR modify lifter • DO NOT remove OR obscure any label • STAY CLEAR of suspended loads • Secure load before using this device 	<ul style="list-style-type: none"> • NO exceda la capacidad tasada • NO USE is las partes estan dañadas, no funcionan correctamente o faltan partes. • NO eleve al personal o eleve cargas sobre el personal • NO eleve la carga mas alto de lo necesario • NO deje desatendida una carga que este suspendida • NO use el elevador a no ser que haya leído y entendido las instrucciones del manual del propietario • NO altere o modifique el elevador • NO quite u oscurezca ninguna etiqueta • MANTENGASE alejado de las cargas suspendidas • Asegure la carga antes de usar este dispositivo 993

A: Tag 993 (back side; attached to lifting bale opening with cable tie)

Model No. _____	Serial No. _____
No. Modelo _____	No. Serie _____
Capacity _____ lbs.	Lifter Weight _____ lbs.
Capacidad _____ kgs.	Peso del Elevador _____ kgs.
BHT-1 Design Category: B BHT-1 Categoría de Diseño B	BHT-1 Service Category: 1 BHT-1 Categoría de Servicio: 1
Read Owners Manual for product safety warnings Lea Manual de Propietarios para advertencias de seguridad de producto	
023 rev 0511	

B: Label 643

⚠ WARNING	⚠ ADVERTENCIA	⚠ AVERTISSEMENT
KEEP CLEAR OF PINCH POINT	MANTENGASE ALEJADO DEL PUNTO DE CORTE	SE TENIR À DISTANCE DU POINT DE PINCEMENT
643		
VESTIL MANUFACTURING CORPORATION • Phone (260) 665-7586 • Fax (260) 665-1339 • sales@vestil.com • www.vestil.com		

LIMITED WARRANTY

Vestil Manufacturing Corporation (“Vestil”) warrants this product to be free of defects in material and workmanship during the warranty period. Our warranty obligation is to provide a replacement for a defective, original part covered by the warranty after we receive a proper request from the Warrantee (you) for warranty service.

Who may request service?

Only a warrantee may request service. You are a warrantee if you purchased the product from Vestil or from an authorized distributor AND Vestil has been fully paid.

Definition of “original part”?

An original part is a part used to make the product as shipped to the Warrantee.

What is a “proper request”?

A request for warranty service is proper if Vestil receives: 1) a photocopy of the Customer Invoice that displays the shipping date; AND 2) a written request for warranty service including your name and phone number. Send requests by one of the following methods:

<u>US Mail</u>	<u>Fax</u>	<u>Email</u>
Vestil Manufacturing Corporation 2999 North Wayne Street, PO Box 507 Angola, IN 46703	(260) 665-1339 <u>Phone</u> (260) 665-7586	info@vestil.com Enter “Warranty service request” in subject field.

In the written request, list the parts believed to be defective and include the address where replacements should be delivered. After Vestil receives your request for warranty service, an authorized representative will contact you to determine whether your claim is covered by the warranty. Before providing warranty service, Vestil will require you to send the entire product, or just the defective part (or parts), to its facility in Angola, IN.

What is covered under the warranty?

The warranty covers defects in the following original, dynamic parts: motors, hydraulic pumps, electronic controllers, switches, and cylinders. It also covers defects in original parts that wear under normal usage conditions (“wearing parts”), such as bearings, hoses, wheels, seals, brushes, and batteries.

How long is the warranty period?

The warranty period for original dynamic components is 30 days. For wearing parts, the warranty period is 30 days. Both warranty periods begin on the date Vestil ships the product to the Warrantee. If the product was purchased from an authorized distributor, the periods begin when the distributor ships the product. Vestil may, at its sole discretion, extend a warranty period for products shipped from authorized distributors by up to 30 days to account for shipping time.

If a defective part is covered by the warranty, what will Vestil do to correct the problem?

Vestil will provide an appropriate replacement for any *covered* part. An authorized representative of Vestil will contact you to discuss your claim.

What is not covered by the warranty?

The Warrantee (you) are responsible for paying labor costs and freight costs to return the product to Vestil for warranty service.

Events that automatically void the Limited Warranty.

- Misuse;
- Negligent assembly, installation, operation or repair;
- Installation/use in corrosive environments;
- Inadequate or improper maintenance;
- Damage sustained during shipping;
- Collisions or other accidents that damage the product;
- Unauthorized modifications: Do not modify the product IN ANY WAY without first receiving written authorization from Vestil.

Do any other warranties apply to the product?

Vestil Manufacturing Corp. makes no other express warranties. All implied warranties are disclaimed to the extent allowed by law. Any implied warranty not disclaimed is limited in scope to the terms of this Limited Warranty. Vestil makes no warranty or representation that this product complies with any state or local design, performance, or safety code or standard. Noncompliance with any such code or standard is not a defect in material or workmanship.

